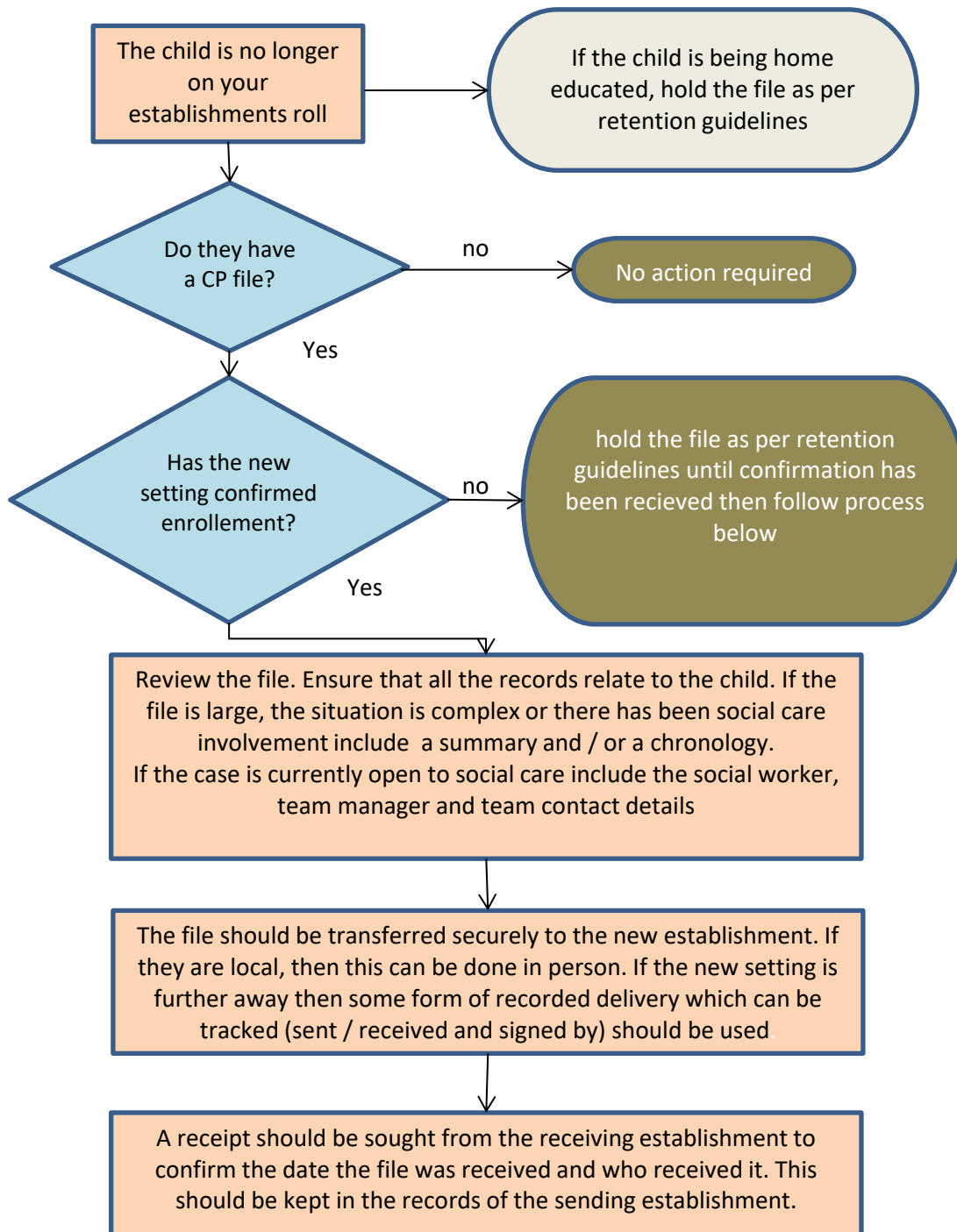


Transfer of CP records

This flow chart outlines the process for educational establishments to follow when a child leaves. The CP record is the collection of concerns, indicators, signs and disclosures that could indicate abuse. The information does not need to have been reported to children's social care but does need to be a relevant or recognised indicator of abuse.



further information can be found at <https://irms.org.uk/page/SchoolsToolkit>