

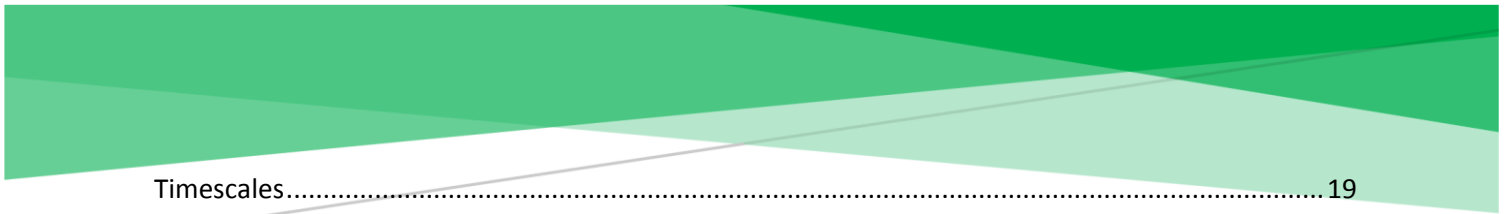


Hampshire
Safeguarding
Children
Partnership

New Arrangements

Contents

Foreword.....	3
Introduction and Context.....	4
Safeguarding Partnership Aims and Objectives.....	4
Thresholds.....	5
Legislative Context.....	5
The Three Statutory Safeguarding Partners.....	5
For Hampshire the lead representatives are:.....	5
For Hampshire the agency representatives are:.....	6
Geographical Area.....	6
Relevant agencies.....	6
The relevant agencies as named by the safeguarding partners are:.....	7
Pan-Hampshire and Isle of Wight collaboration.....	9
Hampshire Safeguarding Children Partnership.....	10
Partnership Board.....	11
Business Group.....	11
Education subgroup.....	11
Scrutiny and Assurance Subgroup.....	12
Learning and Inquiry Group.....	13
Workforce Development Group.....	13
Independent Scrutiny, Audit and Assurance.....	14
Governance & Accountability.....	15
Annual Report.....	15
Partnerships.....	16
Child Safeguarding Practice Reviews.....	16
Multi-Agency Professional Learning and Development.....	17
Funding Arrangements.....	18
Safeguarding Children Partnership Team.....	18
Voice and Engagement.....	18
Performance Data and Intelligence.....	18
Multi-Agency Procedures and Guidance.....	19
Review of the safeguarding arrangements.....	19



Timescales.....	19
Appendix 1 - Hampshire, Isle of Wight, Portsmouth & Southampton (HIPS) Safeguarding Children Partnership Executive Group Arrangements	21
Figure 1	24

Foreword

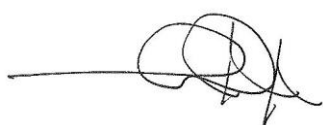
Welcome to the Hampshire multi-agency safeguarding arrangements, known locally as the Hampshire Safeguarding Children Partnership (HSCP).

As leaders we recognise that safeguarding children cannot be achieved in isolation from other partnerships, or our communities. This has been an area of strength in Hampshire in recent years. Our vision is founded on the belief that safeguarding is everyone's business and that, in conjunction with other strategic boards and partnerships, children and young people in Hampshire are safe and achieve their potential. As a safeguarding partnership we have to be clear about how we do this and what this means for partner organisations, children, young people and their families as well as the wider community.

The multi-agency partnership in Hampshire is robust and effective, with clear commitment from senior leaders. We believe the changes outlined in this document will enhance the already strong partnerships we have in Hampshire. The development of the new partnership arrangements has given us the opportunity to review and change some of our ways of working, building on strengths within the good partnership relationships that already exist but focusing on how we can make a real difference to multi-agency frontline practice to improve outcomes for Hampshire children, young people and their families.

We aim to achieve these improvements by developing and spreading good practice based on what we know works well and is evidenced based. This ensures a proactive and responsive approach to the needs of children, young people and families in the area and drives opportunities to shape and influence policy development leading to improved practice and outcomes.

This plan of arrangements, known hereafter as the plan, sets out the arrangements for us, the safeguarding partners to work together and with other agencies, to identify and safeguard children in need of protection in Hampshire.



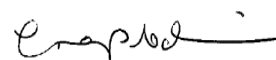
Steve Crocker

Director of Children's Services
Hampshire County Council



Ellen McNicholas

Director of Quality & Board Nurse
West Hampshire Clinical Commissioning
Group (CCG) (on behalf of the five
Hampshire CCGs)



Craig Dibdin

Chief Superintendent
Hampshire Constabulary

Introduction and Context

Helping and protecting children through a co-ordinated approach to safeguarding children is everyone's responsibility. Through collaborative working across organisations and agencies who work with children, young people and families, including those who work with parents/carers, the ambition of our arrangements is that everyone can recognise, respond and fulfil their responsibilities to ensure that children, young people and families are effectively safeguarded and supported.

Organisations, agencies and practitioners should be aware of, and comply with, this plan set out by the safeguarding partners.

The new safeguarding arrangements have been developed to build on the strengths of the previous arrangements under the Hampshire Safeguarding Children Board. The learning and improvement framework, which included clear and robust serious case review processes, multi-agency audits and a comprehensive multi-agency training programme, has been retained with some additions to enable the new Partnership to extend its programme of scrutiny functions and respond to changes in statutory guidance.

Safeguarding Partnership Aims and Objectives

To ensure that the children of Hampshire are safeguarded, and their welfare promoted, the Hampshire Safeguarding Children Partnership will:

- Work effectively and collaboratively towards shared priorities to achieve improved outcomes for our children.
- Build working relationships between partners which support continuous improvement, professional curiosity, constructive challenge, and enable partners to hold each other to account for the outcomes we deliver for children.
- Be self-reflective, open and committed to learning and improvement.
- Embed the learning from local and national safeguarding reviews, and local scrutiny and assurance practices to improve the way children are safeguarded.
- Work, and share information, proactively to enable the early identification and response to new areas of safeguarding and emerging themes.
- Listen and respond to children and young people, and adult victims / survivors of child abuse to inform how services are delivered.
- Ensure services for children and families in Hampshire support parents and carers to provide the best possible care for their children and enable families to live together where possible.
- Facilitate collaborative working beyond organisational boundaries and agency constraints to deliver best outcomes for children and families.

Thresholds

The safeguarding partners will oversee regular review and dissemination of the Hampshire Thresholds Document. This document will be available to all professionals via the Partnership's website.

Legislative Context

The Hampshire Safeguarding Children Partnership (HSCP) is established in accordance with the Children and Social Work Act 2017 (the Act) and Working Together to Safeguard Children 2018 statutory guidance. The HSCP provides the safeguarding arrangements under which the safeguarding partners and relevant agencies work together to coordinate their safeguarding services, identify and respond to the needs of children in Hampshire, commission and publish local child safeguarding practice reviews and provide scrutiny to ensure the effectiveness of the arrangements.

Working Together 2018 explains that the three safeguarding partners in relation to a local authority area are defined under the Children Act 2004 (as amended by the Children and Social Work Act 2017) as:

- the Local Authority
- a Clinical Commissioning Group for an area any part of which falls within the local authority area
- the Chief Officer of Police for an area any part of which falls within the local authority area

The Three Statutory Safeguarding Partners

For each of these three partners, Working Together 2018 defines the lead representatives from each as 'the Local Authority Chief Executive, the Accountable Officer of the Clinical Commissioning Group and a Chief Officer of Police'.

For Hampshire the lead representatives are:

John Coughlan, Chief Executive

Hampshire County Council

Heather Hauschild, Accountable Officer

West Hampshire Clinical Commissioning Group (on behalf of the five Hampshire CCGs)

Craig Dibden, Chief Superintendent

Hampshire Constabulary

As set out in Working Together 2018, the lead representatives can delegate their functions, although they retain accountability for any actions taken on behalf of their agency. In

Hampshire, the lead representatives have identified the following senior officers in their respective agencies who have responsibility and authority for ensuring full participation with these arrangements:

For Hampshire the agency representatives are:

Steve Crocker, Director of Children's Services

Hampshire County Council

Ellen McNicholas, Director of Quality & Board Nurse

West Hampshire Clinical Commissioning Group (on behalf of the 5 Hampshire CCGs)

Craig Dibdin, Chief Superintendent

Hampshire Constabulary

The representatives, or those they delegate authority to, will:

- Speak with authority for the safeguarding partner they represent.
- Take decisions on behalf of their organisation or agency and commit them on policy, resourcing and practice matters.
- Hold their own organisation or agency to account on how effectively they participate and implement the local arrangements.

Geographical Area

The area covered by the arrangements is defined by the Hampshire County Council local authority boundary. It is acknowledged that partners to these arrangements may have responsibility for services outside this area, either due to their organisational boundaries overlapping other local authority areas or because they have responsibilities for children living in another area. Arrangements for how the HSCP will work with its neighbouring partnerships in the Pan-Hampshire and Isle of Wight area are outlined further below.

Relevant agencies

The strength of local partnership working is predicated on safeguarding partners working together collaboratively with relevant agencies whose involvement the safeguarding partners consider is required to safeguard and promote the welfare of children.

The safeguarding partners are obliged to set out within their arrangements which organisations and agencies are required to work as part of those arrangements to safeguard and promote the welfare of local children. These organisations and agencies are referred to as relevant agencies and when nominated by the safeguarding partners as relevant agency organisations, should act in accordance with the arrangements

Acting in accordance with the safeguarding arrangements requires safeguarding partners and relevant agencies to work together and:

- Fully engage with the Hampshire Safeguarding Children Partnership functions as set out within this document.
- Provide information which enables and assists the safeguarding partners to perform their functions to safeguard and promote the welfare of children in their area, including as related to local and national child safeguarding practice reviews.
- Ensure that their organisation works in accordance with the safeguarding procedures and protocols approved by the partnership.
- Have robust safeguarding policies and procedures in place specifically relevant to their organisation.
- Provide evidence of the above to the Partnership when requested as part of its scrutiny arrangements.
- Participate fully in multi-agency audits and assurance activities when required.

The relevant agencies as named by the safeguarding partners are:

- Ministry of Defence
- District/Borough/City Councils
- Child and Family Court Advisory Service (CAFCASS) (listed in WT2018 but who have adopted a national position of not attending)
- Education establishments (primary, secondary, independent, post-16 years and special schools, Pupil Referral units and Early Years Settings).
- Hampshire County Council, Adults' Health and Care
- Hampshire County Council, Children and Families
- Hampshire County Council, Education and Inclusion
- Hampshire County Council, Public Health
- Hampshire Constabulary
- Hampshire Fire & Rescue Service
- Hampshire Hospitals NHS Foundation Trust
- National Probation Service in the Hampshire Local Authority Area
- Hampshire & Isle of Wight Community Rehabilitation Company

- Hampshire Youth Offending Team
- NHS Clinical Commissioning Groups (CCG) (West Hampshire CCG, Fareham and Gosport CCG, North Hampshire CCG, South Eastern Hampshire CCG, North East Hampshire and Farnham CCG).
- NHS England, Local Area Team
- Health providers:
 - Southern Health NHS Foundation Trust
 - Hampshire Hospitals NHS Foundation Trust
 - Frimley Park NHS Foundation Trust
 - University of Southampton NHS Foundation Trust
 - Portsmouth Hospitals NHS Foundation Trust
 - South Central Ambulance Service
 - North Hampshire Urgent Care
 - Solent NHS Trust
 - Sussex Partnership NHS Foundation Trust
 - All Primary Care providers commissioned by the five Hampshire CCGs.
 - Partnering Health Limited (PHL)
 - Independent Providers
 - Commissioned Providers of Substance Misuse Services
- Commissioned Providers of Domestic Abuse Services
- Voluntary Sector
- Winchester Diocese
- Portsmouth Diocese
- Lay Members
- Sporting organisations via the Hampshire and Isle of Wight County Sports Partnership (Energise Me). This includes national sporting bodies who have branches operating in Hampshire such as the Football Agency (FA) for example.

All schools are named as relevant partners. Schools are represented on the main Partnership Board by Head Teacher representatives of Primary Schools, Secondary Schools, Post-16 years establishments, Independent Schools, Special Schools and Pupil Referral Units. Early Years settings are also represented via the Hampshire County Council Early Years team.

Hampshire does have a local authority secure children's home in its borders (Swanwick Lodge). Hampshire also has a specialist, secure mental health inpatient unit that provides

assessment, treatment and care for young people (Bluebird House). These are managed by the Local Authority and Southern Health Foundation Trust, both of whom are represented in the Partnership.

There are no youth custody facilities within the geographical boundaries of the partnership.

The Lead Member for Children (Hampshire County Council) will be a participating observer of the HSCP. This includes attending meetings and receiving all its written reports.

Whilst the legislation and statutory guidance draws a distinction between safeguarding partners and relevant agencies to ensure clarity around accountability, it is clear that all members of the Hampshire Safeguarding Children Partnership have a shared responsibility to work collaboratively to provide targeted support to children and families.

This document describes the arrangements through which the statutory safeguarding partners and those named as relevant agencies, will work together to safeguard and promote the welfare of children in Hampshire.

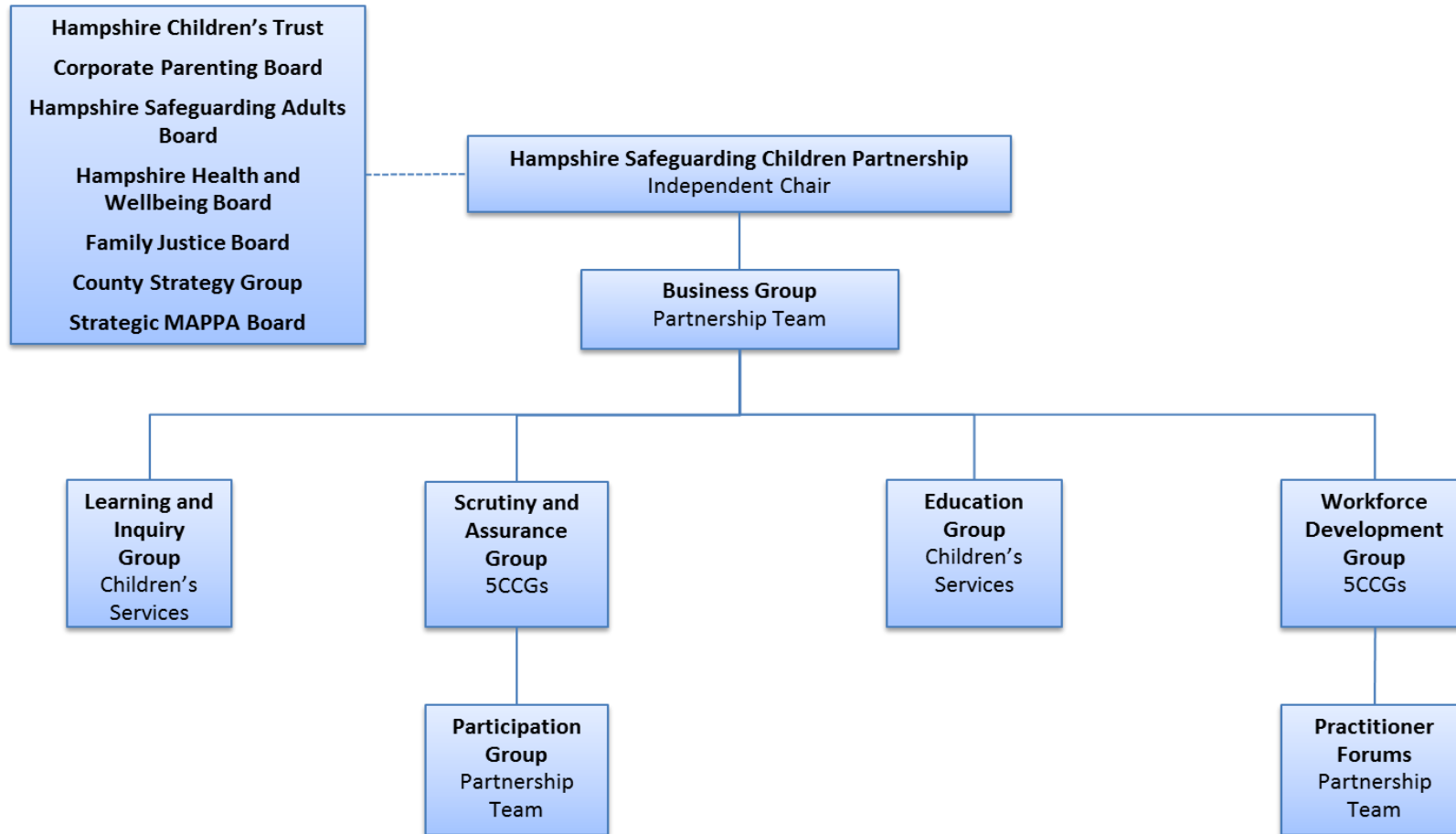
If your organisation is not named and you think it should be, please get in touch with the HSCP by emailing HSCP@hants.gov.uk to discuss this.

Pan-Hampshire and Isle of Wight collaboration

The statutory safeguarding partners in Hampshire have agreed to work in partnership with the statutory safeguarding partners for Isle of Wight, Portsmouth and Southampton, to ensure coherence in safeguarding arrangements across the wider geographical area. The arrangements for Hampshire and Isle of Wight collaboration are known locally as 'HIPS' and are set out in Appendix 1 to this document. The description of arrangements in Hampshire in the paragraphs below need to be read alongside the description of the collaboration arrangements in Appendix 1.

Hampshire Safeguarding Children Partnership

A diagram of the Partnership and its related subgroups is shown here:



Partnership Board

All relevant agencies and safeguarding partners are members of the Partnership Board. Attendees are expected to have a good understanding of safeguarding and be of a senior level to represent their organisation or sector. The partnership meetings will be led by the Independent Chair and meet quarterly. Summary of functions include:

- Facilitating communication between all the safeguarding partners and relevant agencies, strengthening working relationships between organisations.
- Means of consulting with senior safeguarding leads in agencies / sectors.
- Dissemination of learning from case reviews and assurance activities.
- Identifying emerging issues to inform priority setting and raising awareness of emerging issues across the partnership.
- Identifying challenges to safeguarding work and contributing towards the development of solutions
- Linking with other strategic partnerships including the Health and Wellbeing Board, Adult Safeguarding Board, Local Family Justice Board, Strategic MAPPA Board, Corporate Parenting Board and Community Safety Partnerships.

Business Group

The Business Group comprises those with lead responsibility from each of the safeguarding partners and the chairs of the subgroups of the main Partnership Board. The group has overall responsibility for the safeguarding arrangements. Summary of functions:

- Defining how the safeguarding arrangements will operate.
- Ensuring the safeguarding arrangements are working effectively.
- Identify and escalate concerns regarding the delivery of services and/or interagency working regarding the delivery of services and/or interagency working
- Setting the strategic priorities for the partnership.
- Supporting and engaging with relevant agencies through the Partnership Group.
- Ensuring that local and national learning is implemented.
- Maintaining a risk register that identifies strategic risks to the safeguarding of children in the area and the operation of the safeguarding arrangements.
- Produce and publish a yearly report on behalf of the partnership.

Wherever possible, decisions will be made by consensus. Where this is not possible, decisions of the Business Group will be taken by a majority vote of the safeguarding partners.

Education subgroup

This group is chaired by a member of the partnership nominated by the Business Group. The core membership of the group is made up of senior education leaders from primary, secondary and special schools including academies; further education colleges; independent

education establishments, pupil referral units and senior local authority officers within the Education and Inclusion branch of Children's Services. Summary of functions:

- Provide a forum for strategic discussion of child protection and safeguarding in educational establishments across Hampshire.
- Develop and review new and relevant safeguarding guidance and disseminate information accordingly.
- Consider HSCP decisions and recommendations relating to educational establishments and to ensure that they are implemented through a co-ordinated education response.
- Monitor compliance with S175/S157 Education Act 2002 and 'Keeping children safe in education: for schools and colleges' (2018).
- Ensure that there is appropriate discussion and dissemination of lessons emerging from case reviews, audits and best practice and to ensure required actions are completed, reviewed and monitored for impact.
- Review local, regional and national guidance relevant to educational establishments in relation to child protection and safeguarding.
- Identify and address concerns in relation to the delivery of services and/or interagency working within the educational sector.

Scrutiny and Assurance Subgroup

This group is chaired by a member of the partnership nominated by the Business Group. The core membership of the group is made up of senior operational managers from the safeguarding partners who act as decision makers for their organisations. Summary of functions:

- Develop an annual scrutiny and assurance programme derived from the annual business plan, emerging safeguarding issues and inspections of services.
- Commission audits and reviews of safeguarding arrangements and practice within partner agencies.
- Maintain a multi-agency dataset of agreed safeguarding indicators and provide a quarterly analysis on trends and themes to the Partnership Board.
- Ensure that the 'voice of the child' is considered in scrutiny and assurance work undertaken.
- Ensure findings identified from audits, including good practice, are disseminated to front-line professionals.
- Monitor agency compliance with Section 11 of the Children Act 2004, challenge organisations where appropriate and report findings to the Partnership Board.
- Ensure actions arising from quality assurance activities are completed, reviewed and monitored for impact.
- Escalate risks to the Business Group and Partnership Board through the Risk Register.

Learning and Inquiry Group

This group is chaired by a member of the partnership nominated by the Business Group. The core membership of the group is made up of senior operational managers from the safeguarding partners who act as decision makers for their organisations. Representatives from relevant agencies are invited to contribute to the group depending on the nature of the cases involved. Summary of functions:

- Undertaking a 'Rapid Review' of cases in accordance with the requirements in Working Together 2018
- Making recommendations about whether to undertake a Child Safeguarding Practice Reviews / local learning review or to recommend a National Learning Review.
- Receive details of cases which have undergone a Rapid Review and undertake further analysis when requested by the safeguarding partners.
- Draft Terms of Reference for Child Safeguarding Practice Reviews / local learning reviews.
- Oversee the conduct of and / or undertake Child Safeguarding Practice Reviews / local learning reviews
- Report to the Partnership Board with review findings and proposed actions.
- Dissemination of learning via the Partnership Board and the Workforce and Development group.
- Informing the Partnership Board and relevant subgroups of emerging issues and risks

Decisions on recommendations arising from Rapid Reviews will be made by the three safeguarding partners. They will be shared with the Independent Chair to allow independent oversight and scrutiny of the recommendations and decisions.

Learning arising from local reviews will be shared with the HIPS Executive as outlined in Appendix 1.

Workforce Development Group

This group is chaired by a member of the partnership nominated by the Business Group. The core membership of the group is made up of senior operational managers from the safeguarding partners who act as decision makers for their organisations. Summary of functions:

- Identify multi-agency learning and development needs by undertaking an annual needs analysis.
- Develop, maintain and review a multi-agency learning policy.
- Agree a costed programme of learning events and contribute to commissioning arrangements on behalf of the Partnership Board.
- Ensure that learning events remain up to date, relevant and provide local context.
- Ensure that the 'voice of the child' is considered in the commissioning of the multi-agency learning programme.

- Ensure that learning from audits, inspections and case reviews is incorporated within the multi-agency learning programme.
- Consider opportunities for children to contribute to the Partnership Board's annual conference.
- Consider, through member updates, agency compliance with in-house and multi-agency training and to escalate risks to the Business Group and Partnership Board through the risk register
- Monitor and evaluate the effectiveness of the programme of learning through observations and impact assessments.
- Work with other strategic boards to maximise co-commissioning of learning events to achieve efficiency and promote a family approach.

Independent Scrutiny, Audit and Assurance

The HSCP will have an Independent Chair who will also act as an Independent Scrutineer. The Chair will be appointed by, and accountable to, the lead representatives from the safeguarding partners. The appointment of the Independent Chair, should, in the local authority's case, be subject to the approval of the Chief Executive. The Chair will facilitate the Board's business, allowing all Board member agencies to participate fully without any perceived or actual bias towards any one agency. The Chair can also intervene or mediate in issues where there are differences of opinion or tensions in partnership activity. The Chair will act as a critical friend, encouraging reflection on practice and an openness to improving services and provide an objective assessment of the effectiveness of the safeguarding arrangements including how they are working for children and families as well as practitioners.

In addition, the HSCP will retain two Lay Members. Lay Members are independent members of the Board in that they do not work in any of the Board agencies. They provide an external perspective on the work and discussions in board and subgroup meetings and reflect the views of local communities. The Lay Members attend the Partnership Board and some subgroups. They will also be invited to participate in the audit and assurance programme.

Over the course of its first year, HSCP will be exploring a range of additional scrutiny options within its arrangements including the use of peer scrutineers. A rolling annual programme of peer scrutiny visits will be implemented, providing an opportunity for Partnership agencies to visit other settings, meet with frontline staff and gain a better understanding of how safeguarding duties are discharged in practice.

The HSCP Learning and Improvement Framework describes the partnership approach to multi-agency audits. HSCP will lead an annual programme of scrutiny activities on themed areas to be agreed by the Partnership and overseen by the Quality Assurance Group. The programme will reflect the priorities for safeguarding children in Hampshire and will be informed by:

- Child Safeguarding Practice Reviews.
- Performance indicators.
- The need to further explore issues that have caused of concern, including those highlighted through previous audits.
- Feedback from learning and development, management forums or policy implementation.

The programme will be led by members of the Safeguarding Children Partnership Team and professionals from Partnership member agencies. Recommendations for practice change will be made to the Partnership Board as necessary and the Quality Assurance Group will oversee implementation and monitoring of these changes. Audit findings will be shared with HIPS Exec Group as set out in Appendix 1.

Governance & Accountability

The HSCP will have an independent chairperson who will hold all agencies to account.

Each statutory Partnership Board member agency will set out their agency's responsibilities and a clear line of accountability, including delegated functions, for safeguarding and promoting the welfare of children.

The HSCP is responsible for coordinating and ensuring the effectiveness of work undertaken by local agencies to safeguard and promote the welfare of children, but it is not accountable for their operational work. Each agency retains their own existing lines of accountability for their services.

The HSCP does not have the power to direct other organisations; however, it will bring concerns to the attention of the agency concerned and the Partnership Board and escalate to other bodies where appropriate.

The HSCP has a clear work programme, including measurable objectives, and a budget. The budget is agreed by the three safeguarding partners and outlines the agencies that are required to contribute to the Partnership and the level of financial contribution.

Annual Report

The HSCP will publish an annual report which enables the work of the Partnership to be scrutinised by the Independent Reviewer, safeguarding partners and other local partners, and broader partnership bodies such as the Health and Wellbeing Board and the Children's Trust. The annual report will provide an analysis of the work of the partnership in Hampshire and also the work undertaken with partners in the Pan Hampshire and Isle of Wight area. The report will include:

- A summary of the activities undertaken by the partnership.
- Details of child safeguarding practice reviews undertaken during the year and action taken to improve practice.
- Evidence of the impact of the work of the partnership, including training, on outcomes for children and families from early help to looked-after children and care leavers.
- An analysis of any areas where there has been little or no evidence of progress on agreed priorities.
- A record of decisions and actions taken by the partners in the report's period (or planned to be taken) to implement the recommendations of any local and national child safeguarding practice reviews, including any resulting improvements.
- Ways in which the partners have sought and utilised feedback from children and families to inform their work and influence service provision.
- A review of the use of restraint in secure settings.
- The Independent Chair's assessment of the effectiveness of the partnership arrangements over the preceding year.
- Any changes to the safeguarding arrangements.

Partnerships

The HSCP will be independent and will not be subordinate to, nor subsumed within, other local structures. However, to be effective, the HSCP arrangements will link to other strategic partnership work happening locally to support children and families. This will include other public boards including the Health and Wellbeing Board, the Children's Trust, Hampshire Adult Safeguarding Board, Channel Panels and the PREVENT Board, Community Safety Partnerships, the Local Family Justice Board and the Strategic MAPPA Board (Multi-Agency Public Protection Arrangements).

Child Safeguarding Practice Reviews

To deliver on the key functions outlined in Working Together 2018, the partnership will oversee a Learning and Inquiry Group (LIG) which will consider:

- Serious child safeguarding cases that raise issues of importance to the local area.
- 'Near misses'.
- Cases where there has been good practice.

The LIG will conduct Rapid Reviews and recommend the notification of incidents to the National Child Safeguarding Practice Review Panel.

All safeguarding partners and relevant agencies will be expected to refer cases to the LIG for consideration, to provide case file information to any case under review and to participate in learning events.

The LIG will report quarterly into the Business Group and Partnership Board with summary information on all the cases considered, any findings and its recommendations for improvement. It will also provide detailed analysis of findings for the Annual Report. The LIG will make recommendations to the Board for the dissemination of learning through multi-agency training and professional development.

Findings from case reviews will be also be shared with the HIPS Executive as outlined in Appendix 1.

Multi-Agency Professional Learning and Development

Locally, there is an ongoing commitment to developing a consistent approach and access to good quality multi-agency training, which is underpinned by robust evaluation processes to ensure that the training programme is clearly focussed on the needs of partners to deliver effective services. In addition to the needs analysis, the training programme is informed by case audit processes, local and national case reviews and contemporary research.

The partnership will provide multi-agency learning opportunities guided by learning needs analyses and learning from reviews and audits. The partnership is committed to providing a comprehensive multi-agency training programme which includes the following elements:

- Core safeguarding training courses – these provide a foundation for good multi-agency safeguarding practice with the opportunity to attend refresher events to keep knowledge up to date. These courses are offered regularly throughout the year to enable all partners to attend as and when required.
- Subject-specific workshops, conferences, practitioner forums and seminars – these provide an opportunity to explore safeguarding children issues in greater depth. These events vary from year to year, depending on the safeguarding themes identified both nationally and locally.

The Learning and Development Programme is flexible and adaptable to ensure that the needs of the partnership workforce are met, and additional courses will be arranged according to demand.

HSCP events are available free of charge to all safeguarding partners/relevant agencies, and organisations who contribute financially to the Partnership. Other organisations may access the training; however, charges may apply.

Funding Arrangements

The funding arrangements for the HSCP have been agreed for 2019/20 and will comprise of contributions by partner organisations at the same level as previously provided to the Hampshire Safeguarding Children Board 2018/19. Accommodation, legal and communications services are provided by Hampshire County Council.

A review of the funding arrangements will be undertaken during 2019 to enable the safeguarding partners to consider the future resourcing requirements, agree the level of funding provided by each safeguarding partner and any contributions from relevant agencies.

Safeguarding Children Partnership Team

The work of the HSCP will be led and coordinated by the Safeguarding Children Partnership Team. The Team are funded by the financial contributions as set out above. The team work closely with the Safeguarding Partners, Independent Chair and Scrutineer, and partner agencies to ensure the partnership operates effectively and fulfils its statutory requirements.

Voice and Engagement

The voice and experience of children and families will be central to how safeguarding arrangements work effectively.

Whenever a Child Safeguarding Practice Review is undertaken, the consideration will be given to how best to engage with children, parents and carers and support them to effectively contribute to the review. The findings from any reviews will be explained to those involved on completion of the review and prior to any publication.

Multi-agency audits will include views and opinions from children (where appropriate) and / or their families and will be used to inform recommendations for practice improvement.

Multi-agency learning programmes will include collation of the views and experience of children and families in receiving the support and help they need to safeguard children. The HSCP will directly engage with young people's forums in Hampshire and use the voice and feedback from these groups to inform products and initiatives as well as receive feedback on the services provided to them.

Performance Data and Intelligence

The Learning and Improvement Framework for the partnership sets out the way performance information is provided to the Quality Assurance Group to inform its assessment of the effectiveness of the help being provided to children and families (including early help). Data relating to key safeguarding processes and particularly vulnerable groups of children will be

provided each quarter with an analysis that provides an explanation of any trends and issues for attention of the group. This information will be collated by the Safeguarding Children Partnership Team, reviewed and analysed to inform a quarterly report outlining key trends and themes, recommendations for further scrutiny and identifying areas for potential strategic intervention.

This will be supplemented by specific reports on topics that have been identified by the Quality Assurance Group as requiring assurance monitoring. The framework will be subject to regular review by the Business Group and therefore the issues covered may vary according to the needs of children in Hampshire and risks identified.

Multi-Agency Procedures and Guidance

The Pan Hampshire and Isle of Wight safeguarding children procedures apply across Hampshire, Isle of Wight, Portsmouth and Southampton (HIPS). They provide a clear framework under which organisations will work together to safeguard children. The procedures are updated regularly to take account of local and national learning and any changes in legislation or statutory guidance. Additional guidance and procedures that cover a range of specific circumstances are included and the following areas of safeguarding are addressed:

- Risks, indicators and the protection of children with disabilities.
- Resolving professional disagreements and escalating.
- Information sharing between practitioners.
- Safe recruitment, selection and retention of staff and volunteers.
- Expectations around whistleblowing mechanisms and training.
- Children living away from home.


All member organisations of the HSCP should have in place appropriate, robust safeguarding policies and procedures that should be compatible and aligned to the HIPS interagency procedures. These 'single agency' procedures must include the escalation process within that organisation and clear whistleblowing procedures.

Review of the safeguarding arrangements

These arrangements will be reviewed by the safeguarding partners at the end of 2019/20 and thereafter a minimum of every three years. Additional or amended statutory guidance will be responded to at the time of publication.

Timescales

The Hampshire Safeguarding Children Partnership plans were published on 27 June 2019 and will be fully implemented by 29 September 2019 at which point the Hampshire Safeguarding



Children Board will cease to operate. Any serious case reviews ongoing at that point will be transferred to the new Partnership for completion.

Appendix 1 - Hampshire, Isle of Wight, Portsmouth & Southampton (HIPS) Safeguarding Children Partnership Executive Group Arrangements

1. Background

- 1.1. Working Together 2018 (WT2018) allows more flexibility for safeguarding arrangements to operate across larger areas/multiple local authority boundaries. Early discussions in the Local Safeguarding Children Board (LSCBs) across Hampshire and the Isle of Wight indicated that each local authority area will retain responsibility for their own local safeguarding arrangements, under the auspices of the three new safeguarding partners (local authority, police and health via the CCG).
- 1.2. It was acknowledged that for many agencies and professionals who work across more than one of the local authority areas, there would be benefit in greater joined-up working on strategic issues and common themes.
- 1.3. Given that each local area was keen to retain some degree of local arrangement, partners agreed to form a Hampshire, Isle of Wight, Portsmouth and Southampton (HIPS) Executive Group, supported by some specific four-area subgroups, to work alongside the four local partnerships.

2. Desired outcomes

- 2.1. The overarching outcome of the new arrangements is that **children in Hampshire and the Isle of Wight should be safeguarded from harm**. More specifically, the intention is that new ways of working are based on the following principles:
 - be designed to ensure that services are delivered in the best interests of the child.
 - not duplicate existing work but provide strategic direction and challenge to enable enhanced co-ordination of activity and understanding of impact.
 - provide a clear route for escalation of any system-wide issues and an agreed forum for the Safeguarding Partners to collectively fulfil their statutory duties.
 - ensure that we make the best use of collective resources.

- be established within the existing resources (both financial and in people hours terms) and should not incur additional cost to agencies.

- local partnerships can continue to identify their own priorities in addition to any identified at a strategic level by the HIPS Executive.

- local areas ensure that the voices of children and families are clearly represented in local partnership work.

3. Role of HIPS arrangements and relationship with Local Safeguarding Children Partnership

4. The role of the HIPS Executive Group is to provide strategic direction and coordination of safeguarding activity across the pan Hampshire and Isle of Wight area, to promote best practice, implement local and national learning and identify issues requiring strategic intervention by the Safeguarding Partners across the HIPS area.

5. Membership and frequency of 4LSCB Executive

- 5.1. To support this role and relationship of mutual accountability, the membership of the 4LSCB Executive will be focussed to the three Safeguarding Partners across each of the four LSCB areas, namely:

- Directors of Children's Services from each of the represented local authorities. Directors of Children's Services will represent education establishments (those who are maintained by the Local Authority) including Early Years services.
- Hampshire Constabulary, represented through the Chief Superintendent with lead safeguarding responsibility.
- Health, represented by Clinical Commissioning Groups (CCGs) of West Hampshire CCG, Hampshire and Isle of Wight CCG, Portsmouth CCG and Southampton CCG. Clinical Commissioning Group representatives will represent the health sector in their local area. They will ensure dialogue with other health commissioning bodies across the HIPS area, namely NHS England (South East) and NHS England Specialist Commissioning.
- The Safeguarding Partners have also invited the Regional Schools Commissioner to attend the group to represent Academy educational establishments.

5.2. The Safeguarding Partners will act as the conduits and facilitate the flow of information and business between the HIPS Executive and the local Safeguarding Children Partnerships.

6. Chairing of a HIPS Executive

6.1. The HIPS Executive will be chaired by an Independent Chair newly recruited by the Safeguarding Partners for this role.

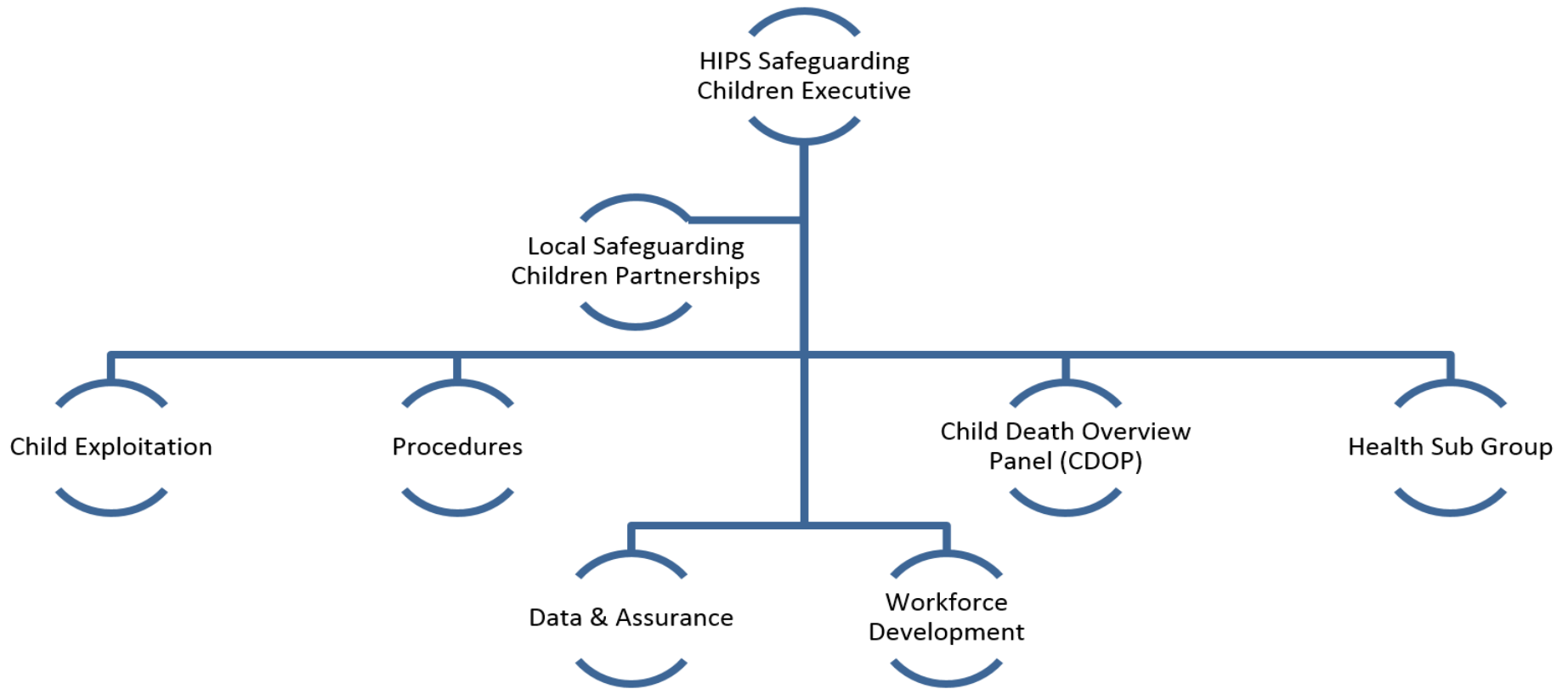
7. Related groups

7.1. The HIPS Executive will convene four standing subgroups where there is a clear benefit to coordinating specific areas of business across the HIPS area:

- **Health group** – This group will coordinate safeguarding business across the health economy across the HIPS area. It will take the lead on the promotion and implementation of any best practice and learning for the health sector. It should be noted that the Isle of Wight will continue to hold its local Health Subgroup across Children and Adults but core members from that group, including the Chair, will attend the HIPS Health Group to ensure alignment and cross-communication of health themes.
- **Child Exploitation group** – The purpose of this group is to develop a shared understanding of the threat/need in respect of child exploitation, including patterns of activity that may reflect the organised exploitation of children; identify risks requiring strategic intervention and operational issues that can be dealt with more appropriately through the existing local structures; to drive forward the response to child exploitation through a tasking system that maximises the specialist skills and experience of staff across the pan-Hampshire and Isle of Wight area; to ensure that the vulnerabilities and risks associated with children who go missing are understood and incorporated within a consistent and robust multi-agency response.
- **Procedures group** – This group will develop all common multi-agency policies and procedures that inform single agency policy and practice across the HIPS area and lead on the Section 11 self-assessment audit.
- **Child Death Overview Panel** - This Group will perform the functions of the Child Death Overview Panel as outlined in Working Together 2018. It should be noted that this group will report to the HIPS Executive until the Pan Hampshire and Isle of Wight Integrated Care System (ICS) is fully established, at which point the governance and reporting functions will transfer to the ICS.

7.2. Other workstreams, e.g. Quality Assurance, Workforce Development, and specific areas of business will be undertaken via Task and Finish or project focussed groups. The partners remain committed to undertaking the Section 11 Audit process on a Pan Hampshire and Isle of Wight basis. The arrangements are shown in Figure 1 below:

Figure 1



8. Case reviews and learning

- 8.1. Local Partnerships will commission and carry out their own local learning reviews. The learning and good practice arising will feed into both the local partnerships and the HIPS Executive to allow themes to be reviewed across the broad area and inform future initiatives.

9. Review

- 9.1. The implementation and effectiveness of the new arrangements will be reviewed by the Safeguarding Partners in September 2020.